

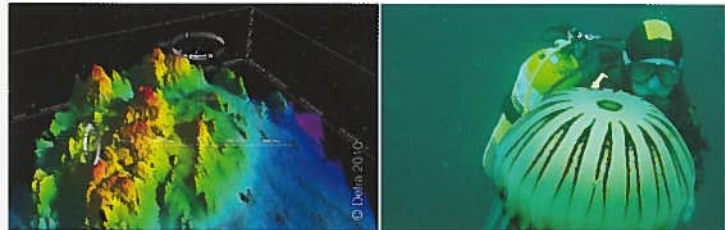


Standards and Guidelines

Significant resources can be saved by the application of standards which speed up access to, and use of geographical data.

The Government have stated that they "will ensure that all data published by public bodies is published in an open and standardised format, so that it can be used easily and with minimal cost by third parties". MEDIN is working towards these aims by deriving the following standards & guidelines:

Data Guidelines: Define the data and information to be stored with a particular data type ensuring the data can be easily reused (e.g. Benthic invertebrate sediment sampling by grab or core) www.oceannet.org/mdg



The principal benefits of these guidelines are to:

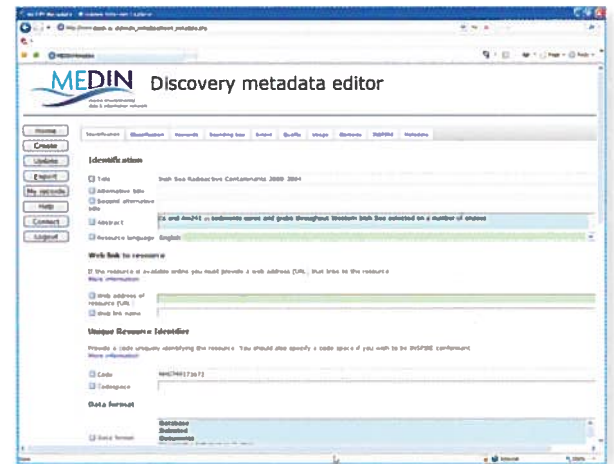
- Instil best practice amongst users
- Allows specification of a consistent format for data in contracts which can be readily used and includes all relevant attributes (rather than a different format for each contract)
- Allow easy ingestion of data to Data Archiving Centres
- Improve interoperability between organisations by providing a format which can be used to import and export data



Discovery Metadata Standard: A standard and tools to assist people in generating discovery metadata; recording information about a dataset so it can be easily discovered by a third party.

To generate metadata, MEDIN have provided an online editing tool and also a specific tool that allows GIS users to generate metadata using a stylesheet for transformation from ESRI/ISO to the MEDIN standard.

Further information at: www.oceannet.org/mds



Term Lists: Literally as it says – list of terms within a specific topic that improves the ability to exchange data (e.g. a list of ship names).

Further information at: www.oceannet.org/cv