

The Crown Estate and MEDIN: Our Approach

Pete Edmonds – Marine Data Manager
11 November 2013

MEDIN Partners Meeting



What I will try to answer...

- Who are The Crown Estate and why are we interested in MEDIN anyway?
- What happens to data that developers collect?
- How has MEDIN helped?
- What is needed?

THE CROWN ESTATE

VISION 2022
making a positive impact



UK PLC

PLACE MAKING

I ❤️ CROWN ESTATE

BALANCE

TRANSPARENCY

STAKEHOLDERS

PARTNERSHIP & TRUST

SUSTAINABILITY

COMMERCIALISM
INTEGRITY
STEWARDSHIP

1760
1961 ACT

- UK-wide interests
- Urban
 - Coastal
 - Energy & Infrastructure
 - Rural
 - Windsor

RENEWABLES

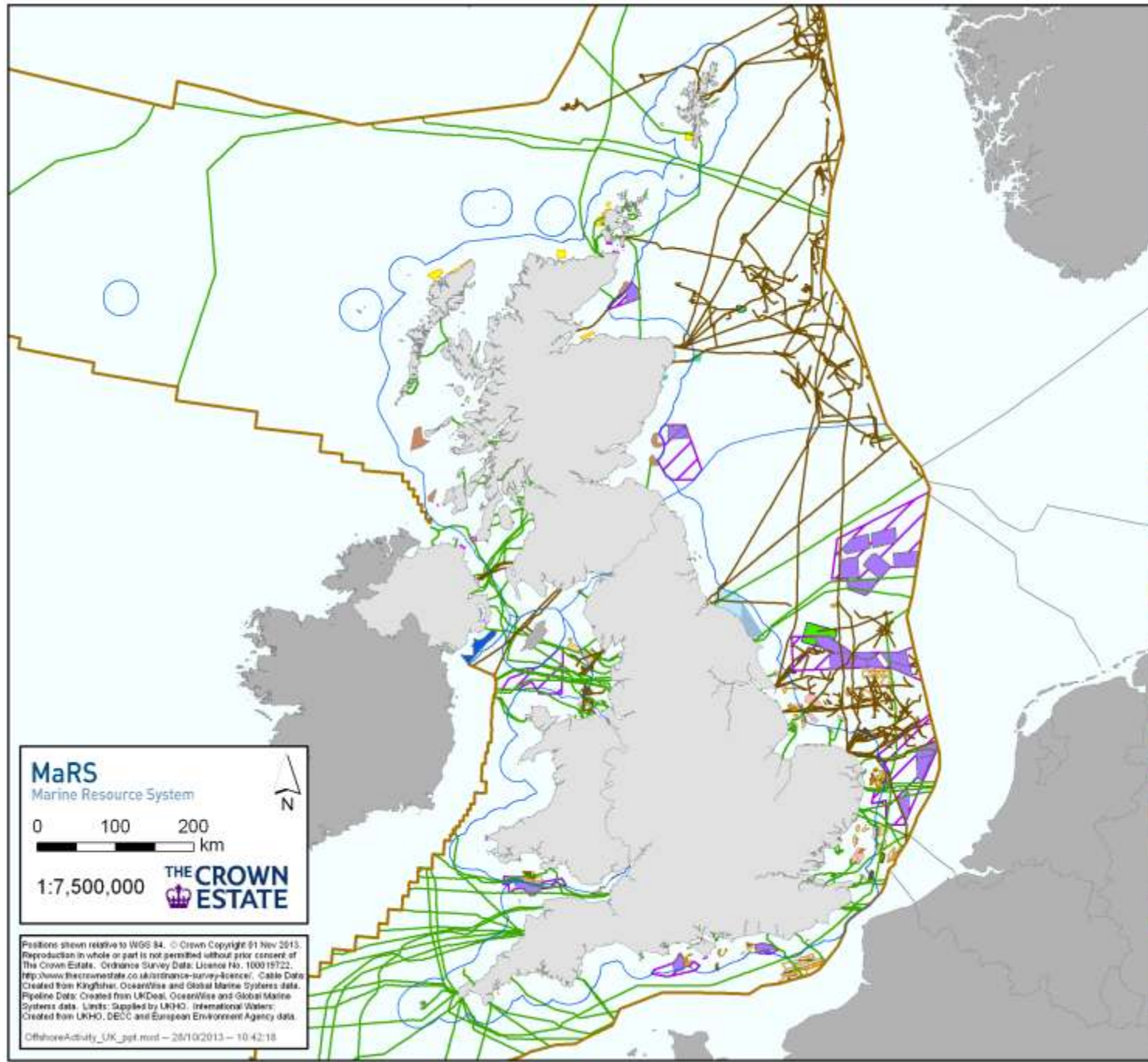
THE CROWN ESTATE

ONE TEAM

£££

VISION 2022
making a positive impact

The Crown Estate All Offshore Activity (UK)



- Offshore Wind Activity**
 - Demonstration Wind Farm Site
 - Round 1 Wind Farm Site
 - Round 2 Wind Farm Site
 - Round 1 or 2 Wind Farm Extension Site
 - Round 3 Agreement for Lease
 - Round 3 Wind Farm Site
 - Scottish Wind Farm Site
 - Northern Ireland Offshore Wind Resource Area
- Wave and Tidal Activity**
 - Wave Site
 - Tidal Site
- Cable and Pipeline Activity**
 - Active Cable
 - Active Pipeline
- Marine Aggregate Activity**
 - Production Licence
 - Application Area
 - Exploration and Option Area
 - Option Area
 - Potash Mine Lease
 - Potash Exploration and Option Agreement
- CCS and Gas Storage Activity**
 - Natural Gas Storage Site
 - Carbon Capture and Storage Site
- Base Map**
 - Territorial Waters Limit
 - UK Continental Shelf
 - International Waters
 - United Kingdom

MaRS
Marine Resource System

0 100 200
km

1:7,500,000

Positions shown relative to WGS 84. © Crown Copyright 01 Nov 2015.
 Reproduction in whole or part is not permitted without prior consent of
 The Crown Estate. Ordnance Survey Data. Licence No. 100019722.
<http://www.thecrownestate.co.uk/ordnance-survey-science/>. Cable Data
 Created from Kingfisher, OceanWise and Global Marine Systems data.
 Pipeline Data: Created from UKDeal, OceanWise and Global Marine
 Systems data. Limits: Supplied by UKHO. International Waters:
 Created from UKHO, DECC and European Environment Agency data.

OffshoreActivity_UK_gpt.mxd — 26/10/2013 — 10:42:18

The Crown Estate Offshore Renewable Energy (UK)



Offshore Wind Activity

- Demonstration Wind Farm Site
- Round 1 Wind Farm Site
- Round 2 Wind Farm Site
- Round 1 or 2 Wind Farm Extension Site
- Round 3 Agreement for Lease
- Round 3 Wind Farm Zone
- Scottish Wind Farm Site
- Northern Ireland Offshore Wind Resource Area

Wave and Tidal Activity

- Wave Site
- Tidal Site

Base Map

- Territorial Waters Limit
- UK Continental Shelf
- International Waters
- United Kingdom
- Europe

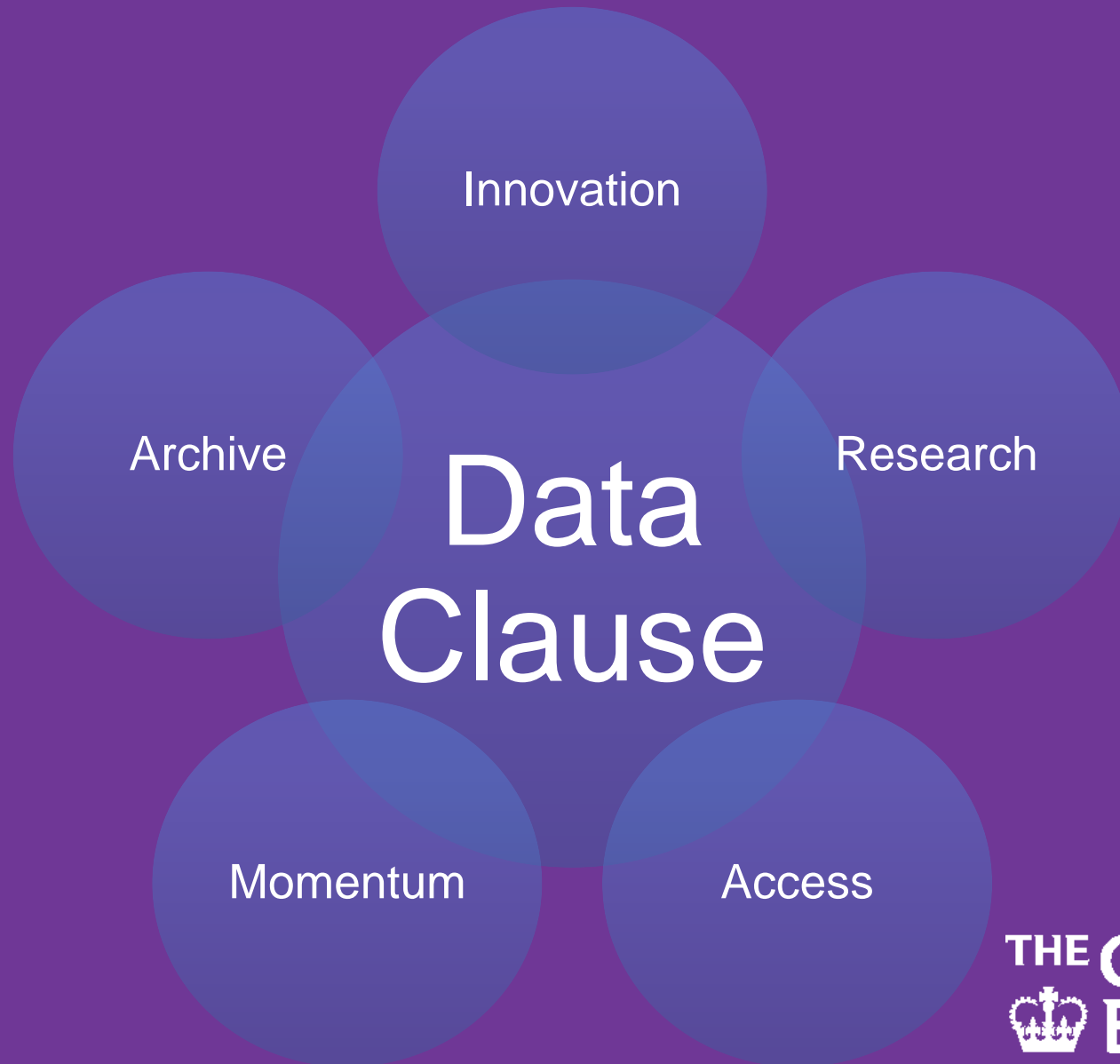
MaRS
Marine Resource System

0 100 200
km

1:7,500,000

Positions shown relative to WGS 84. © Crown Copyright 01 Nov 2013. Reproduction in whole or part is not permitted without prior consent of The Crown Estate. Ordnance Survey Data, Licence No. 100019722. <http://www.thecrownestate.co.uk/ordnance-survey-licence/>. Units: Supplied by UKHO. International Waters: Created from UKHO, DECC and European Environment Agency data.

Why are we interested in data?



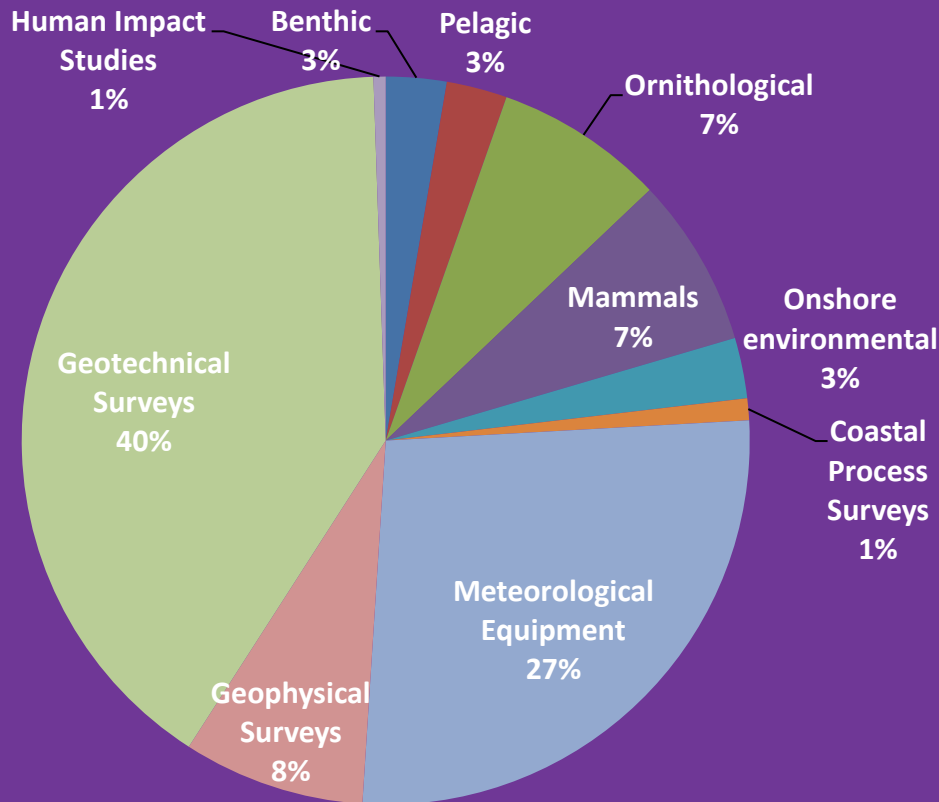
How are we involved with MEDIN?

- Sponsors
- Active members
 - Standards Working Group
 - Resources and Applications Working Group
- Targeted funding where direct benefit
- Contributors
- Users



What do the developers collect?

c. 4% of total capital cost, c. £30 million for a typical 500 MW wind farm spent to get a project to consent¹



Already > £100m spent by Round 3 offshore wind in UK

What happens to the data?

[Home](#) [Announcements](#) [Data Requirements](#) [Related Links](#) [FAQ's](#)

 **THE CROWN
ESTATE**

Data Search

Search

 Your Basket (0) Items 

Marine Data Exchange

The Marine Data Exchange provides access to survey data and reports collated during the planning, building and operating of offshore renewable energy projects.

The Crown Estate acts as trustee for these data. By sharing the information on this website we aim to help promote the research and innovation taking place within the offshore renewable energy industry.

How do you search for what you want? Simply enter a term in the search box - and access a wealth of information from offshore wind to wave and tidal energy projects all around the UK.

Latest Announcements

The Crown Estate launches new wave and tidal knowledge sharing hub

[Read more](#)

Apr 24

Marine Data Exchange to boost "Blue Economy"

[Read more](#)

Feb 27


Looking to invest in wave and tidal energy arrays

[Read more](#)

Jan 30


The Crown Estate
16 New Burlington Place
London W1S 2HX

 020 7851 5000

 [Email us](#)

The Crown Estate
6 Bell's Brae
Edinburgh EH4 3BJ

 0131 260 6070

 [Email us](#)

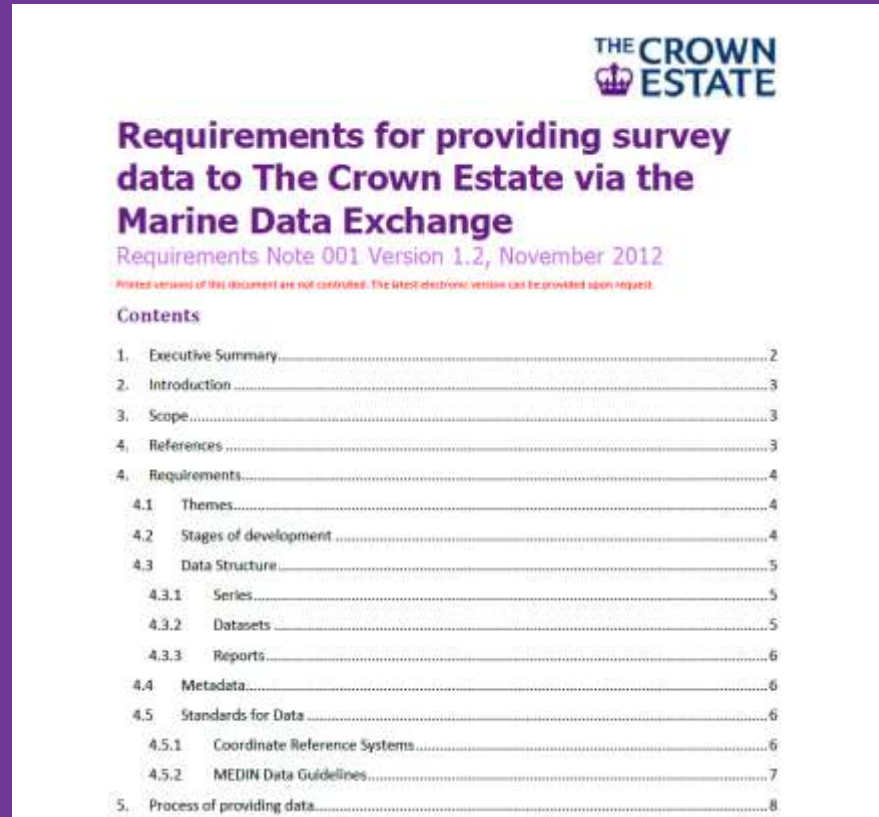
www.thecrownestate.co.uk

Why not use MEDIN DACs?

- We do! (well, we will!)
- Manage data on a development rather than thematic basis for commercial reasons
- Commercial need to hold the data within our firewalls

Requirements

1. Structure
2. Metadata
3. Coordinates
4. Guidelines



The cover page features the Crown Estate logo at the top right. The title is in a large, bold, dark blue font. Below the title is the version information and a note about printed and electronic versions. The 'Contents' section is a table with page numbers.

THE CROWN ESTATE

Requirements for providing survey data to The Crown Estate via the Marine Data Exchange

Requirements Note 001 Version 1.2, November 2012

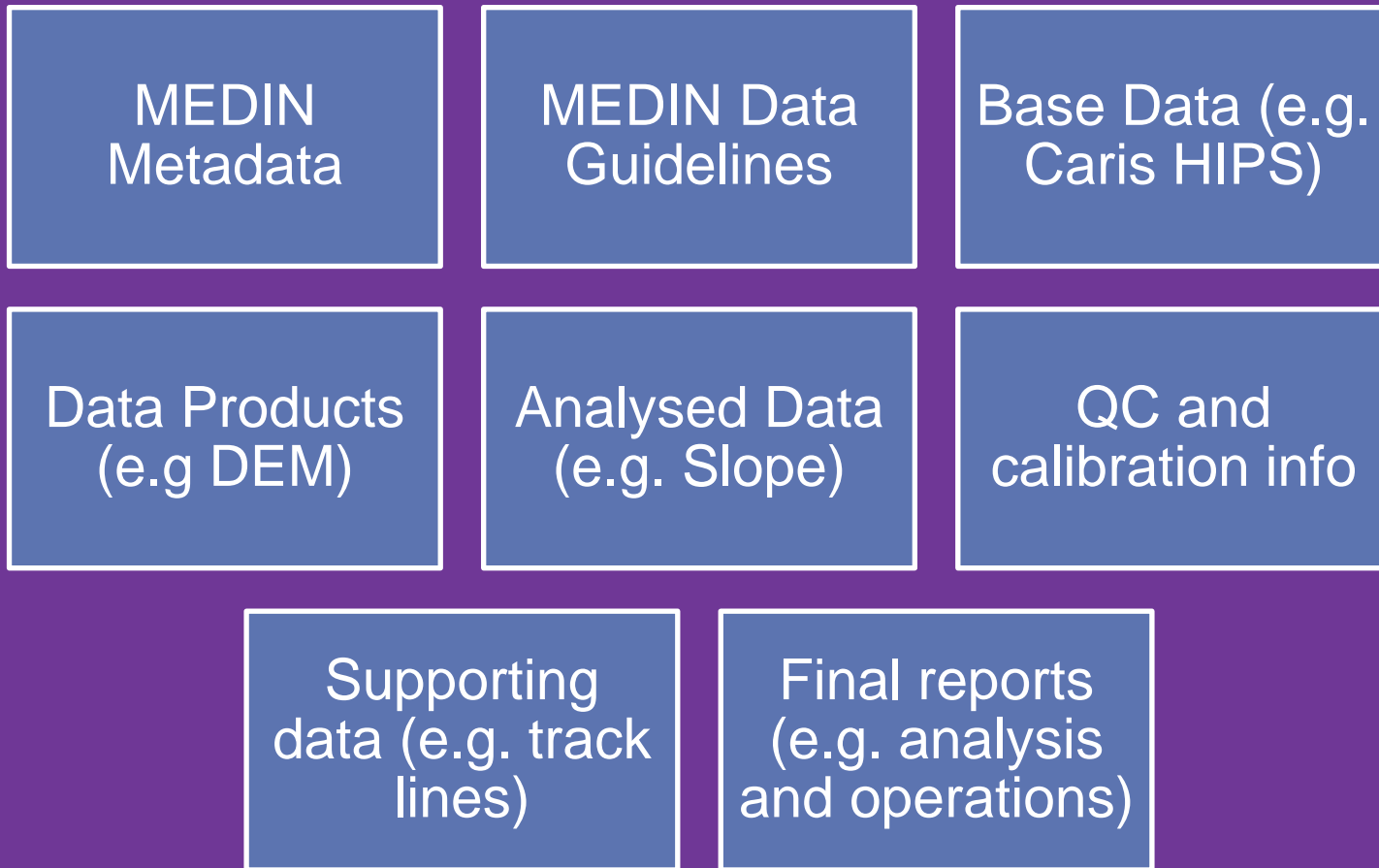
Printed versions of this document are not controlled. The latest electronic version can be provided upon request.

Contents

1. Executive Summary.....	2
2. Introduction	3
3. Scope.....	3
4. References	3
4. Requirements.....	4
4.1 Themes.....	4
4.2 Stages of development	4
4.3 Data Structure.....	5
4.3.1 Series.....	5
4.3.2 Datasets.....	5
4.3.3 Reports.....	6
4.4 Metadata.....	6
4.5 Standards for Data	6
4.5.1 Coordinate Reference Systems.....	6
4.5.2 MEDIN Data Guidelines.....	7
5. Process of providing data.....	8

<http://www.marinedataexchange.co.uk/media/829/RN%20001%20Requirements%20for%20providing%20data%20to%20The%20Crown%20Estate%20v1-1.pdf>

“Data Package”



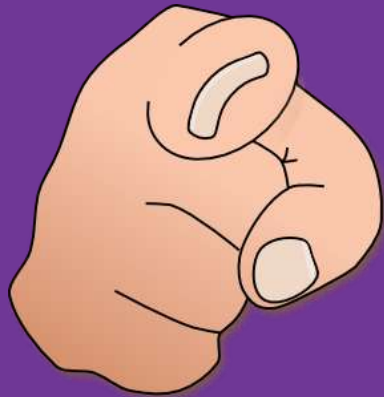
Summary

- All data we have (c. 800 surveys - 75TB) described by MEDIN metadata
- Using MEDIN data guidelines for QA
- Actively QA'ing data and assessing confidentiality

What's next?

- Long term archiving at DACs
- Promote the uptake of MEDIN's principles throughout the offshore sector
- Metadata Maestro updates
- Continue to work closely with MEDIN

What's needed?



YOU!

What I hope I've answered...

- Who are The Crown Estate and why are we interested in MEDIN anyway?
- What happens to the data that developers collect?
- How has MEDIN helped?
- What is needed?

Any further questions?

www.marinedataexchange.co.uk

Pete Edmonds
Marine Data Manager

peter.edmonds@thecrownestate.co.uk | +44 (0)207 851 5341

